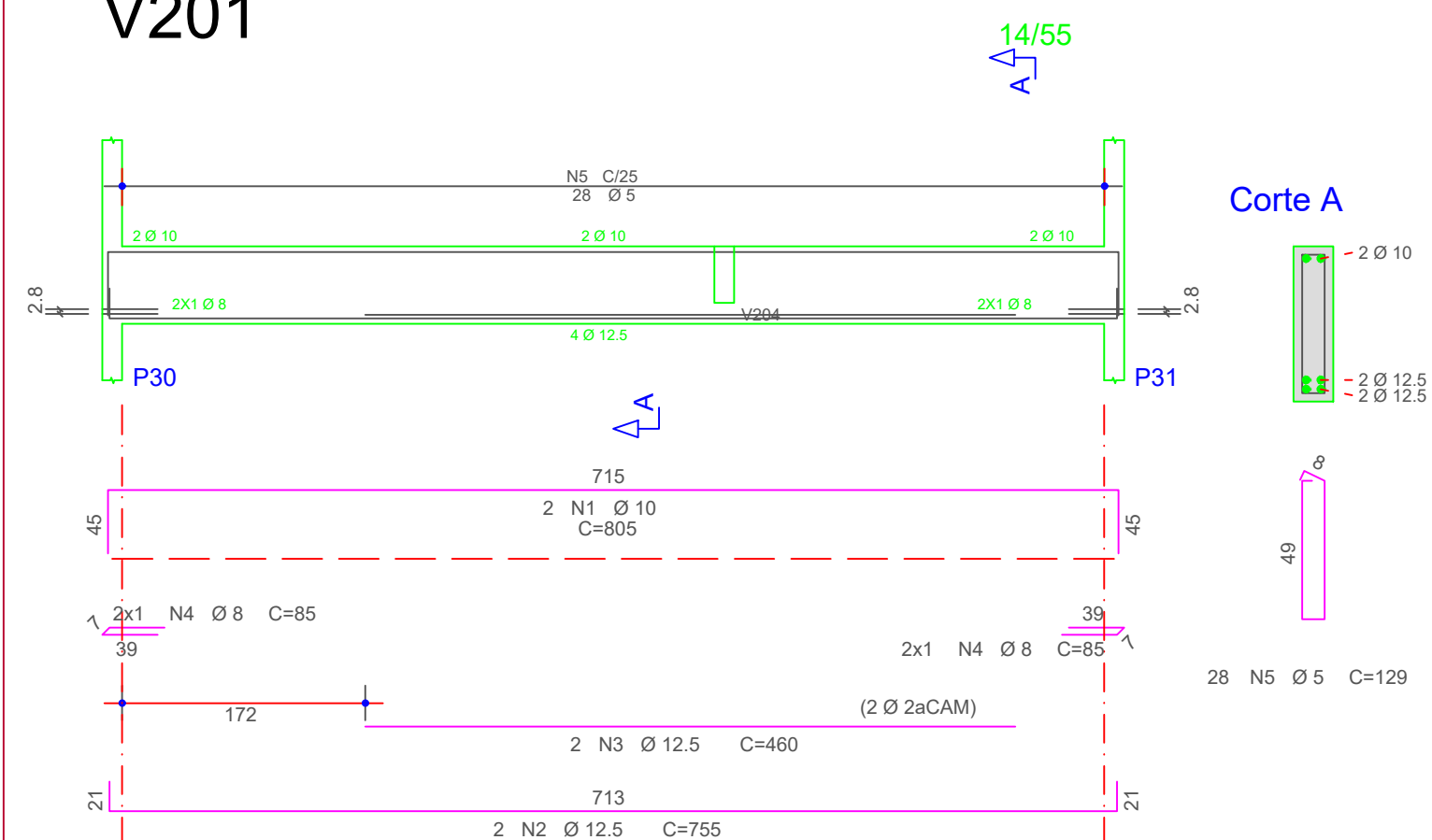
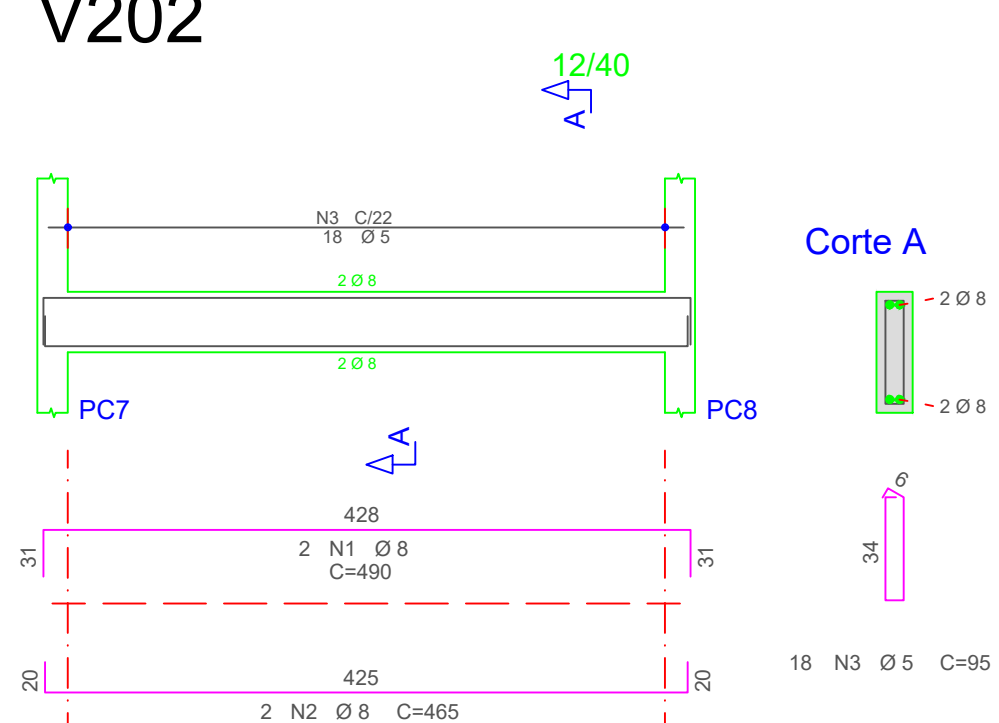


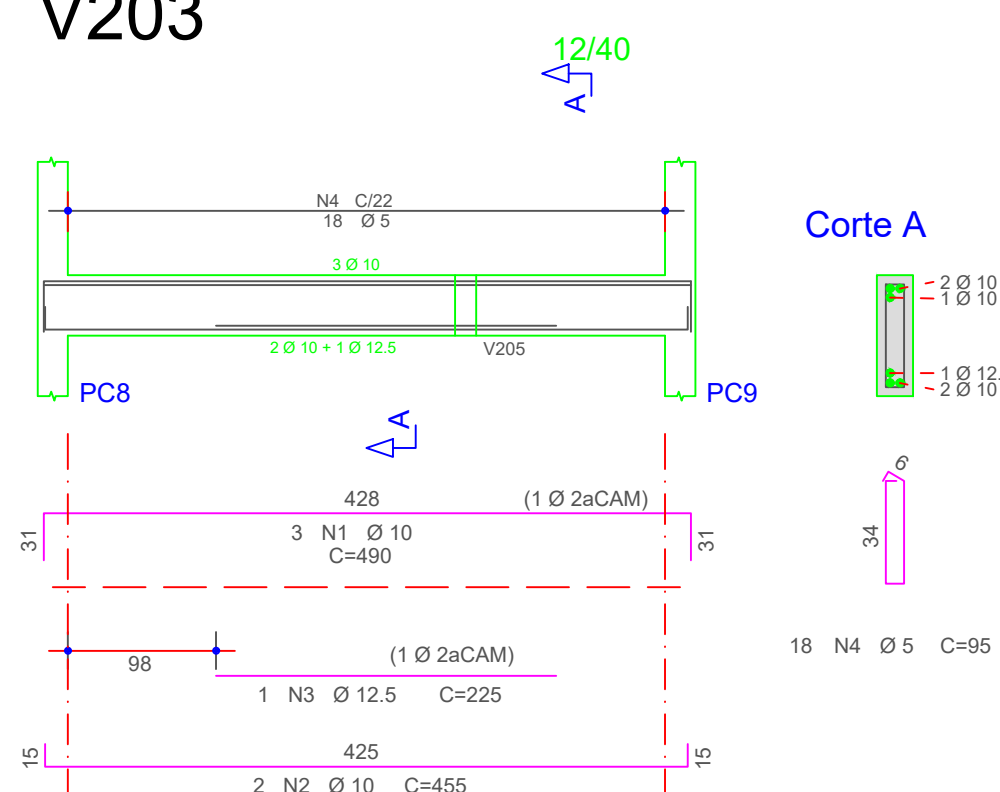
## V201



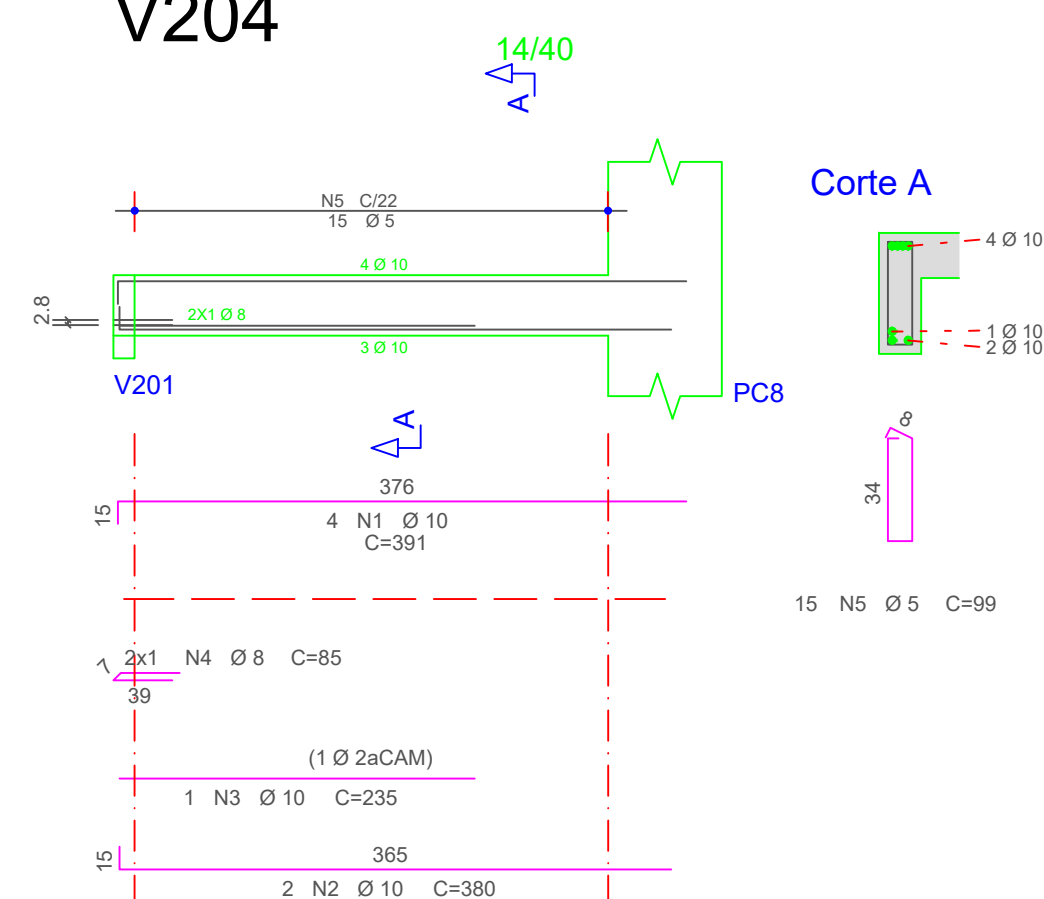
## V202



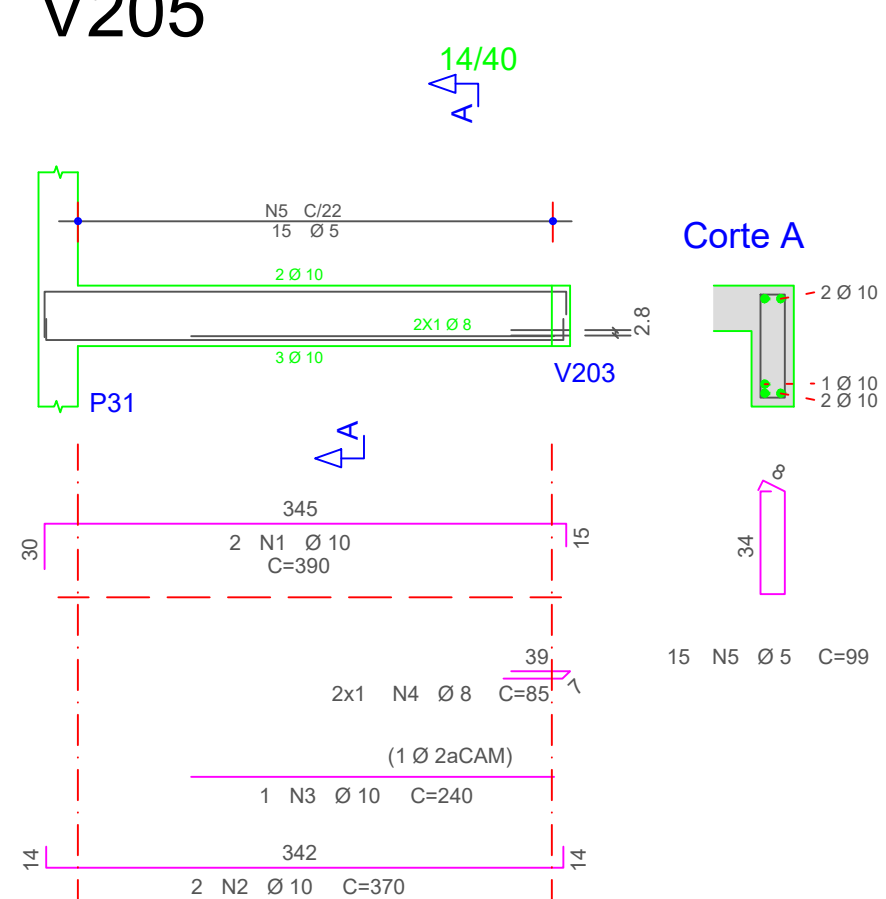
## V203



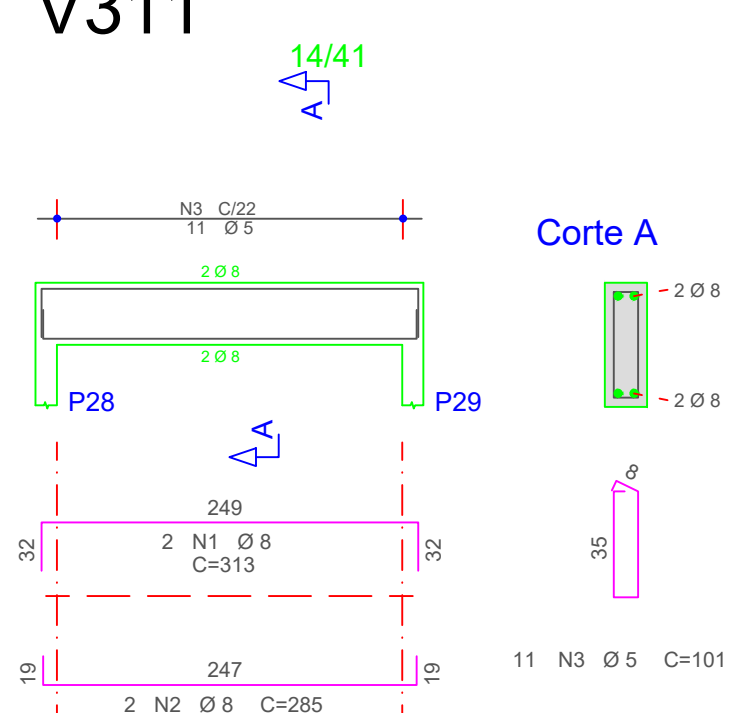
## V204



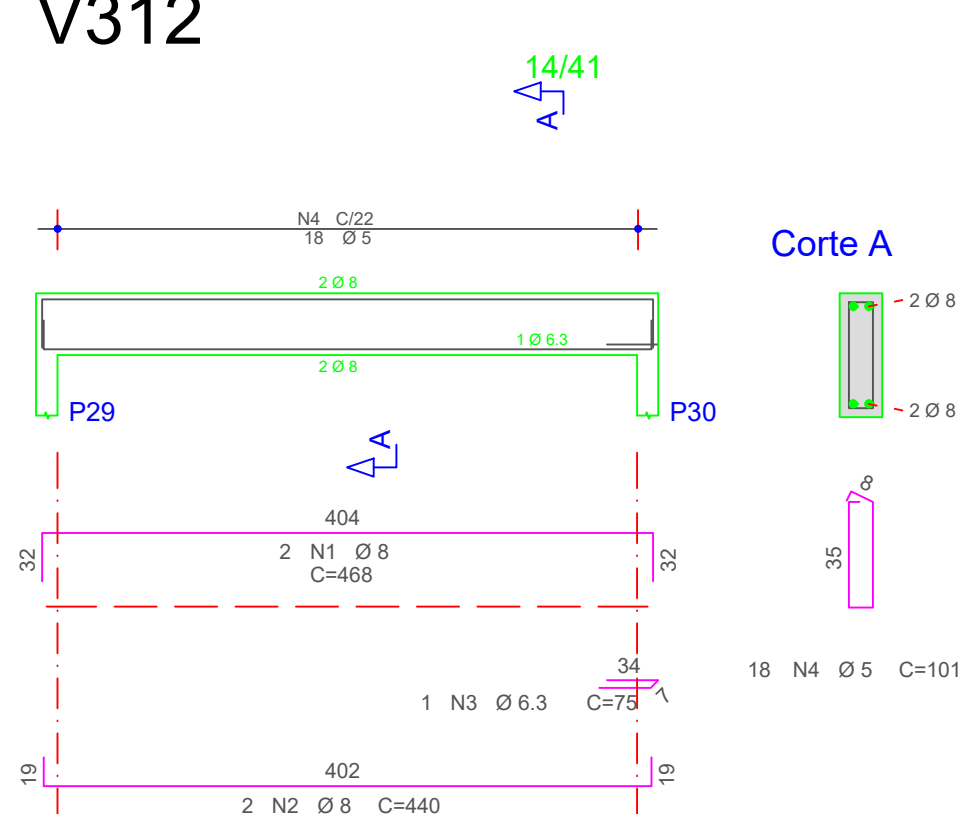
## V205



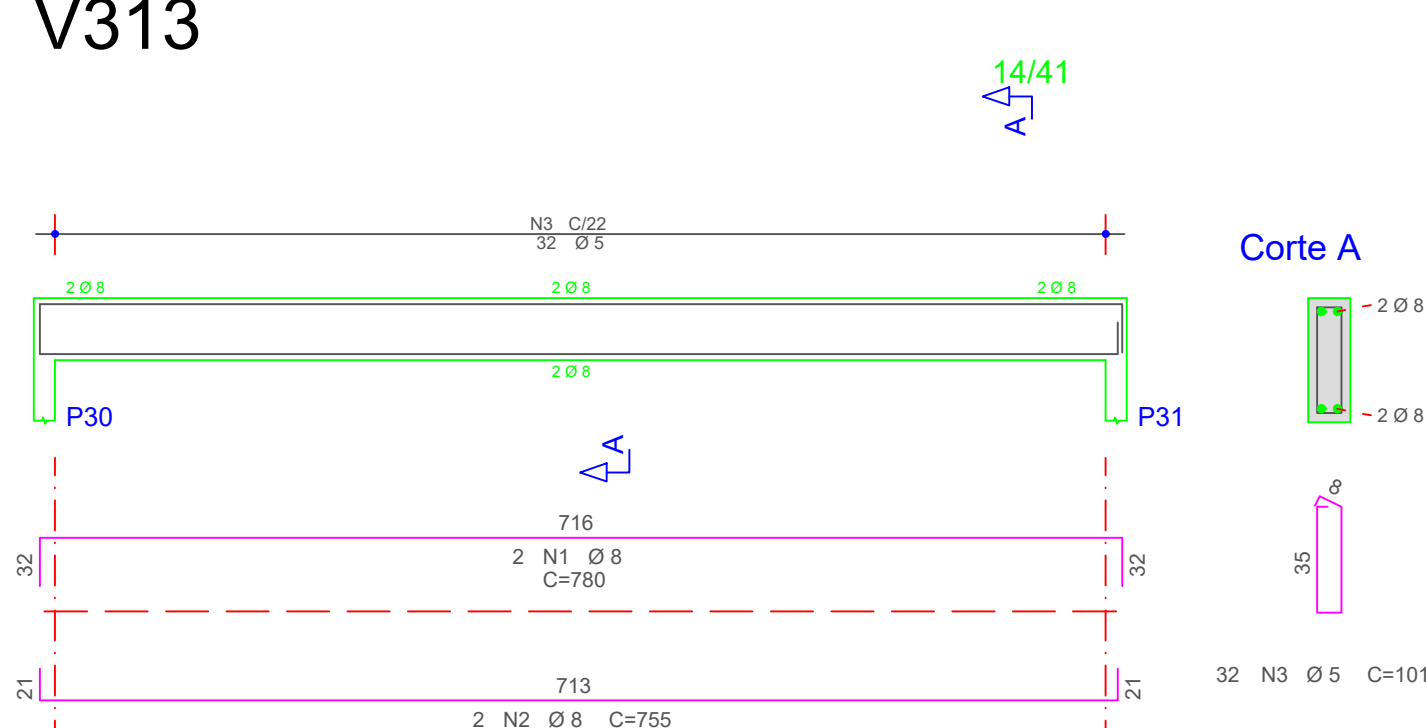
## V311



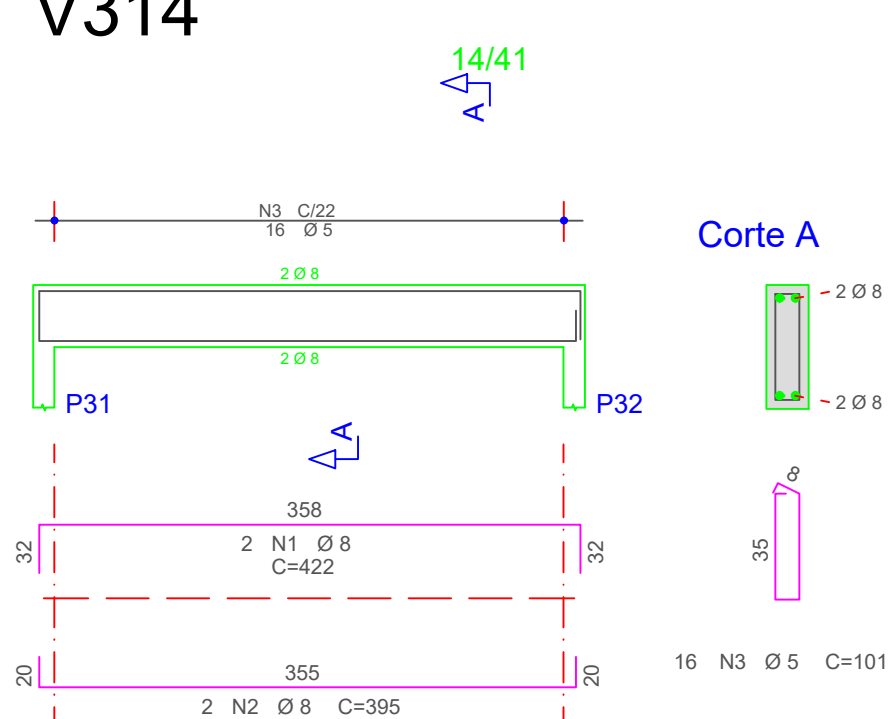
## V312



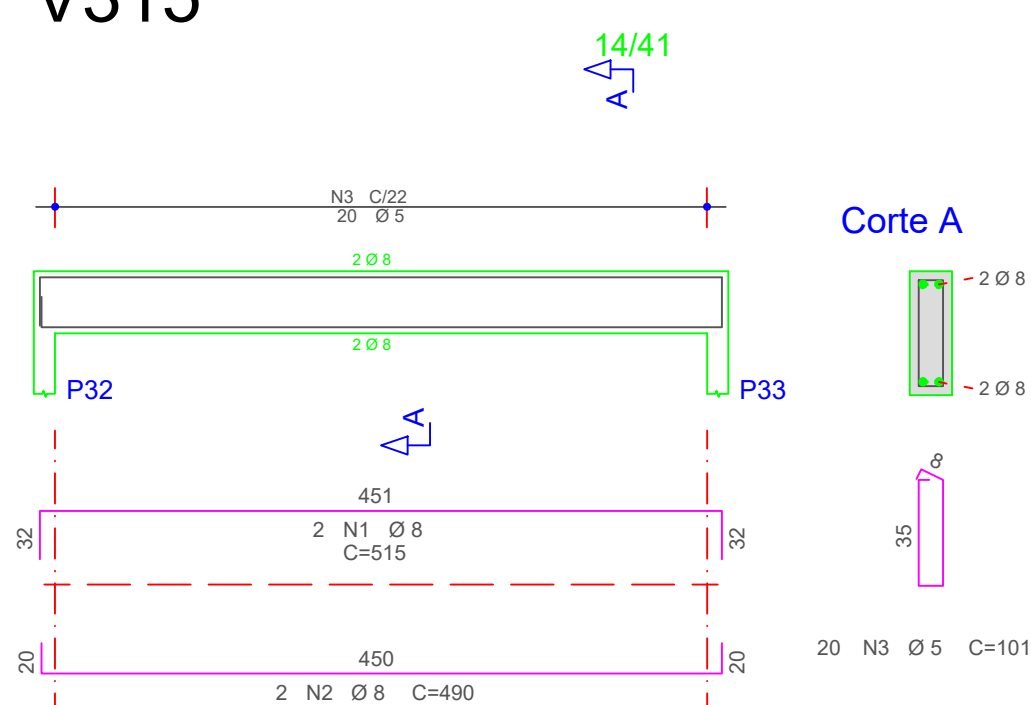
## V313



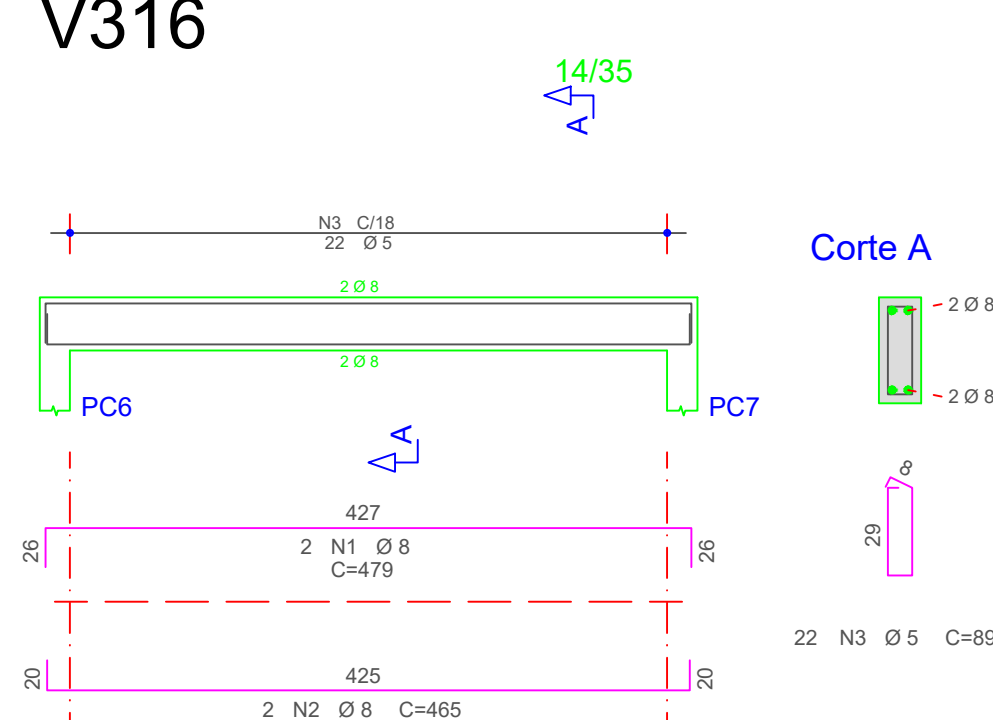
## V314



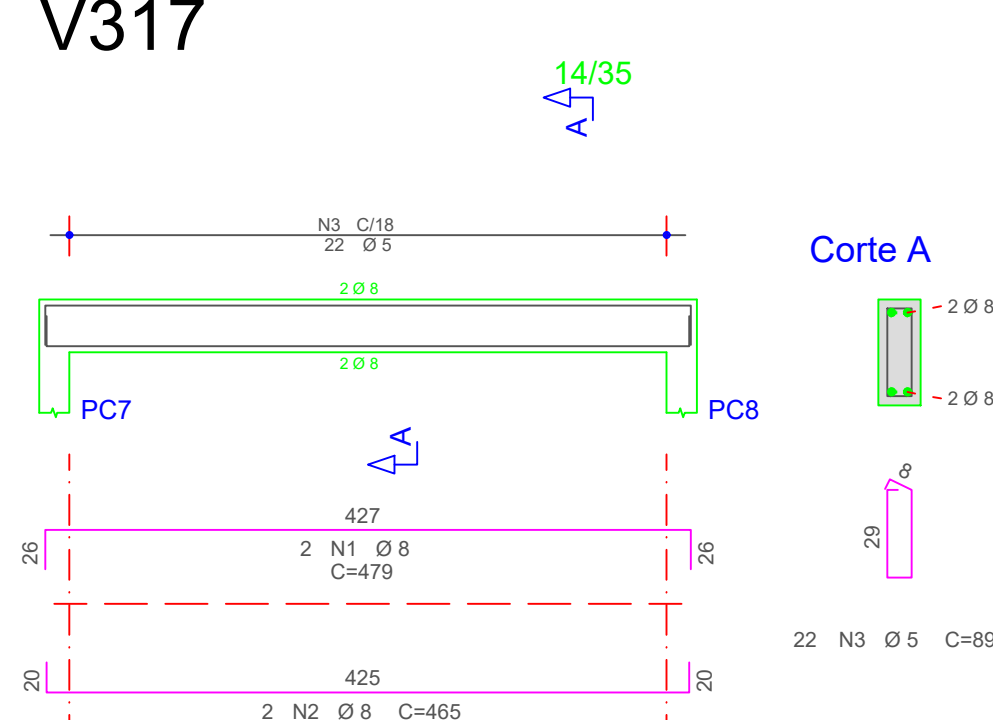
## V315



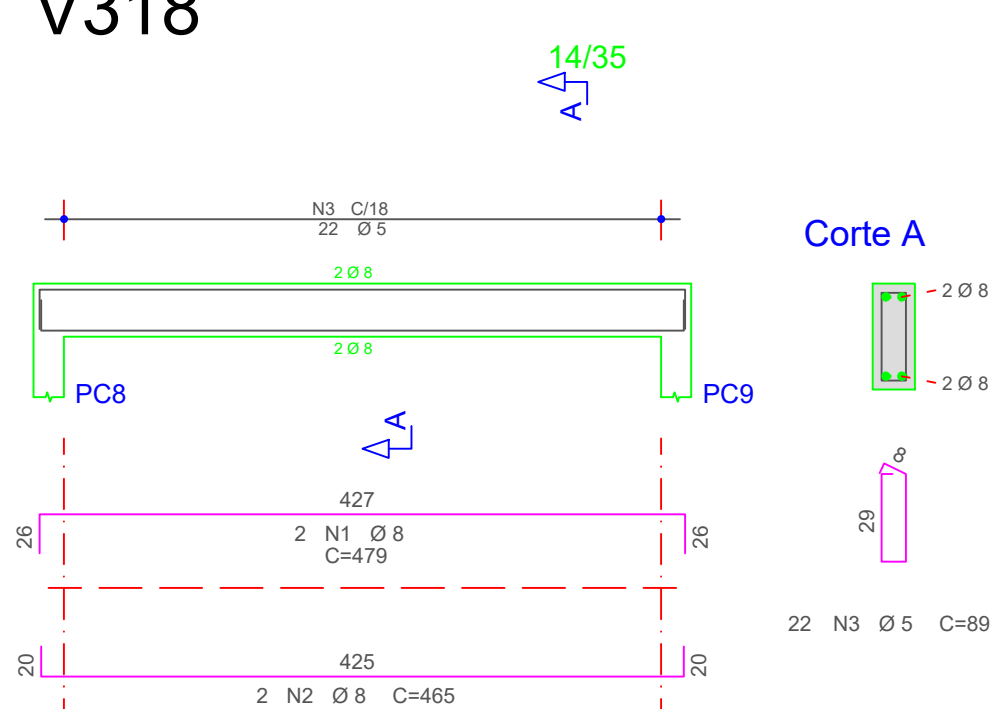
## V316



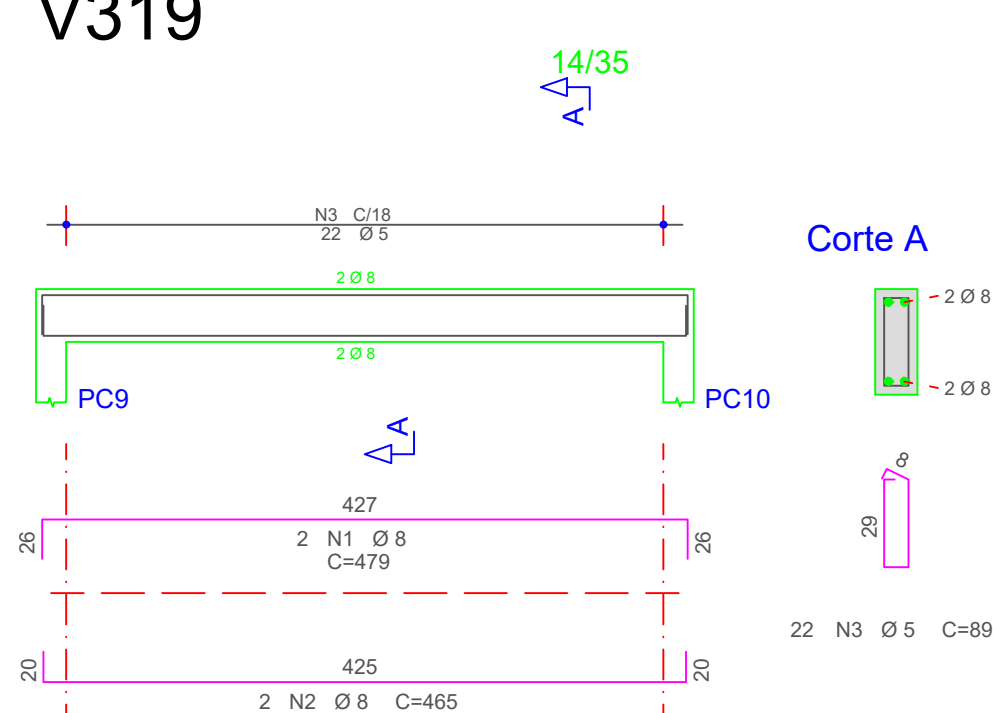
## V317



## V318



## V319



	AÇO	POS	BIT (mm)	QUANT	COMPIMENTO	
					UNIT (cm)	TOTAL (cm)
V201	50A	1	10	2	805	1610
	50A	2	5	2	755	1510
	50A	3	12,5	2	480	920
	50A	4	8	4	85	340
V202	60A	5	5	28	129	3612
	50A	1	8	2	490	980
	50A	2	8	2	465	930
	60A	3	5	18	95	1710
V203	50A	1	10	3	490	1470
	50A	2	10	2	455	910
	50A	3	12,5	1	225	225
	60A	4	5	18	95	1710
V204	50A	1	10	4	391	1564
	50A	2	10	2	380	760
	50A	3	10	1	235	235
	50A	4	8	2	85	170
V205	60A	5	5	15	99	1485
	50A	1	10	2	390	780
	50A	2	10	2	370	740
	50A	3	10	1	240	240
V311	50A	4	8	2	85	170
	60A	5	5	15	99	1485
	50A	1	8	2	313	626
	50A	2	8	2	285	570
V312	60A	3	5	11	101	1111
	50A	1	8	2	465	936
	50A	2	8	2	480	880
	50A	3	6,3	1	75	75
V313	60A	4	5	18	101	1818
	50A	1	8	2	780	1560
	50A	2	8	2	755	1510
	60A	3	5	32	101	3232
V314	50A	1	8	2	422	844
	50A	2	8	2	395	790
	60A	3	5	16	101	1616
	V315	50A	1	8	2	515
50A		2	8	2	490	980
50A		3	5	20	191	2020
V316		50A	1	8	2	479
	50A	2	8	2	465	930
	60A	3	5	22	89	1958
	V317	50A	1	8	2	479
50A		2	8	2	465	930
60A		3	5	22	89	1958
V318		50A	1	8	2	479
	50A	2	8	2	465	930
	60A	3	5	22	89	1958
	V319	50A	1	8	2	479
50A		2	8	2	465	930
60A		3	5	22	89	1958
RESUMO AÇO CA 50-60						
	AÇO	BIT (mm)	COMPR (m)	PESO (kg)		
	60A	5	276	43		
	50A	6,3	1	0		
	50A	8	199	78		
	50A	10	83	51		
	50A	12,5	27	26		
Peso Total		50A =	45 kg			
Peso Total		50A =	135 kg			

Volume de concreto (C-30) = 7,63 m<sup>3</sup>  
Área de forma = 131,64 m<sup>2</sup>